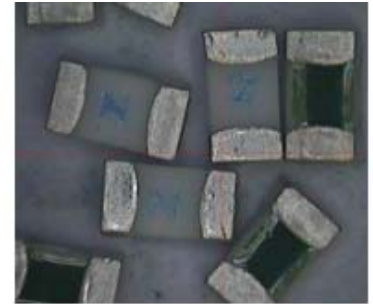


Description

06 122 Series are the fuses set the industry standard for performance, reliability and quality. The solder-free design provides excellent on-off and temperature cycling characteristics during use and also makes our SMD fuses more heat and shock tolerant than typical subminiature fuses.



Electrical Characteristics		
Rated Current	1.0In	2.5In
250mA~5A	4 hour minimum	5 sec maximum

Features

- AEC-Q200 Automotive Grade Certified
- Compatible with reflow and wave solder
- Excellent environmental integrity
- One time positive disconnect
- Lead Free and Halogen free material

Specifications

Specification							
Part No.	Rated Voltage	Rated Current (A)	Breaking Capacity (A) ¹	Typical Cold Resistance (mOhms) ²	Typical Voltage Drop (mV)	Typical Pre-Arcing I ² t (A ² Sec) ³	Alpha Mark
	DC						
06 122.0.25	63V	0.250	50A	3250	893	0.0004	D
06 122.0.375		0.375	50A	1310	587	0.0009	E
06 122.0.5		0.500	50A	1070	582	0.001	F
06 122.0.75		0.750	50A	470	427	0.009	G
06 122.1		1	50A	230	335	0.01	H
06 122.1.5		1.5	50A	150	270	0.04	K
06 122.2	63V ⁴	2	50A	72	160	0.115	N
06 122.2.5		2.5	50A	52	145	0.14	O
06 122.3		3	50A	35	130	0.28	P
06 122.3.5		3.5	50A	23.8	130	0.5	R
06 122.4		4	50A	21	120	0.6	S
06 122.5		5	50A	14	110	1.9	T

1. DC Interrupting Rating (Measured at rated voltage, time constant of less than 50 microseconds, battery source)

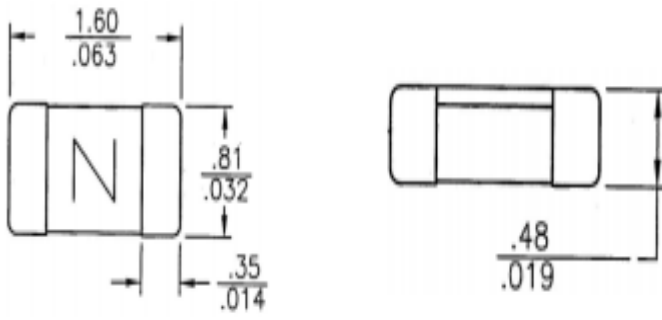
2. DC Cold Resistance are measured at <10% of rated current in ambient temperature of 25degrees

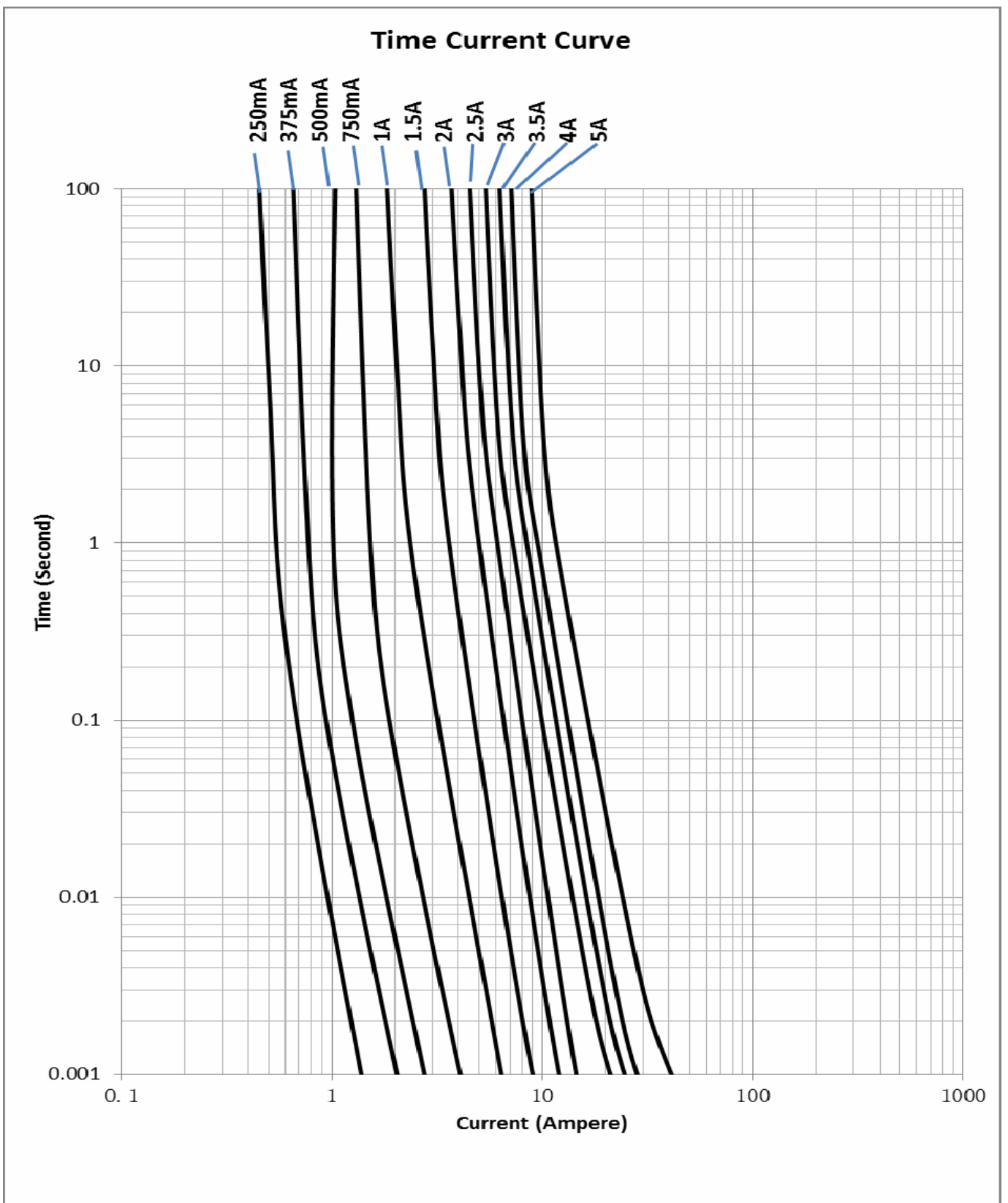
3. Typical Pre-arcing I²t are measured at 10In Current

4. Internal qualification for 2-5A @ 63Vdc, UL Approval is pending.

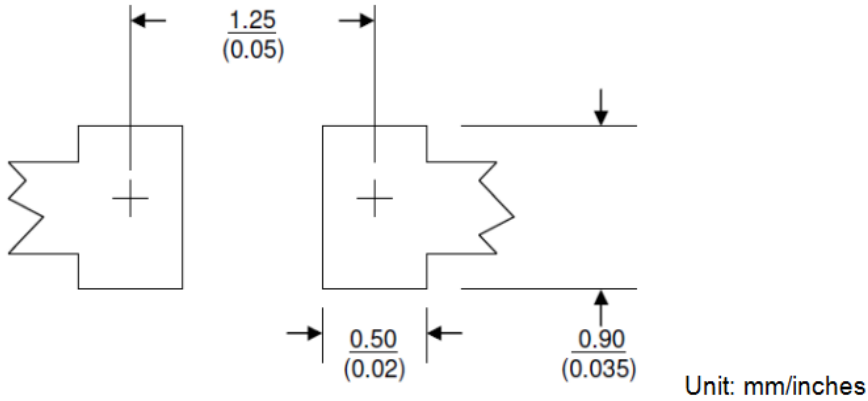
Specifications are subject to change without notice. Application testing is strongly recommended.

Dimension Drawing not to scale (Unit: mm/inch)





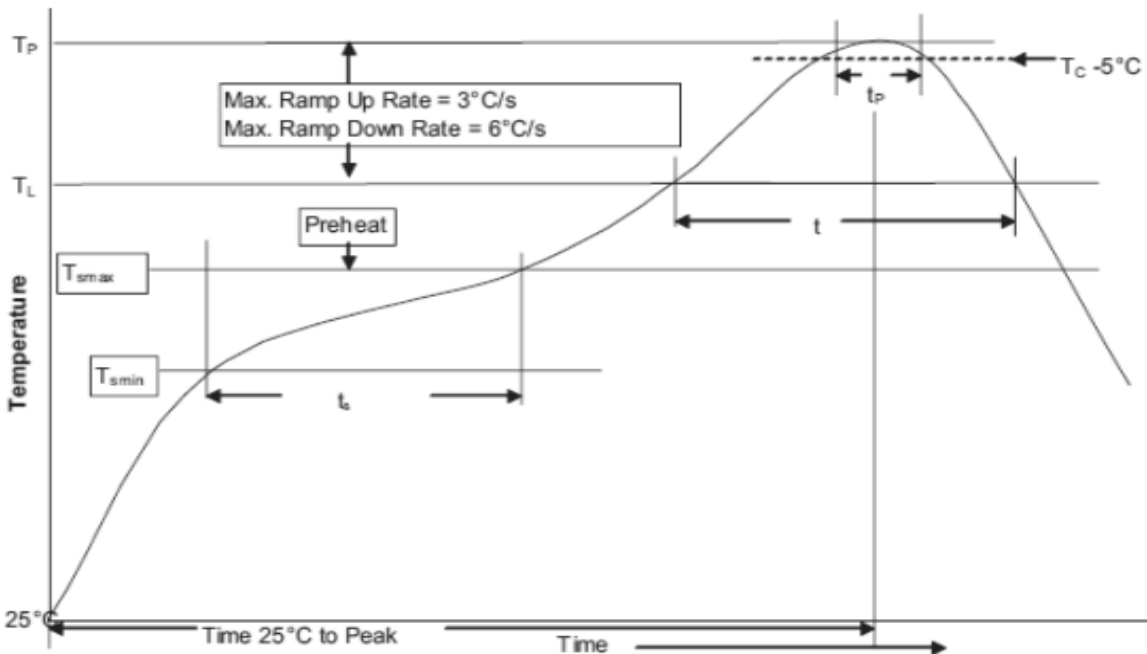
Recommended land pattern



Soldering method

- Wave solder
 - Reservoir temperature: 260°C
 - Time in reservoir: 10 seconds maximum
- Infrared reflow
 - Temperature: 260°C
 - Time: 30 seconds maximum

Solder reflow profile

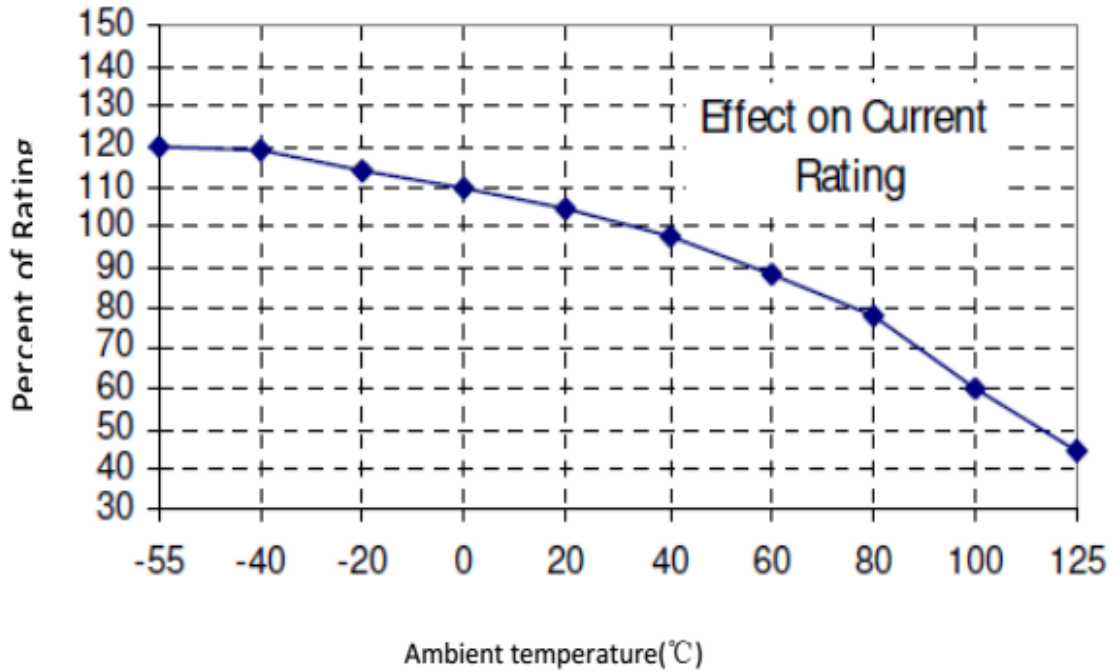


Profile Feature		Lead(Pb) free solder
Preheat and soak	<ul style="list-style-type: none"> Temperature min. (T_{smin}) 	150°C
	<ul style="list-style-type: none"> Temperature max. (T_{smax}) 	200°C
	<ul style="list-style-type: none"> Time (T_{smin} to T_{smax}) (t_s) 	60 - 120 Seconds
Average ramp up rate T_{smax} to T_p		3°C / Second Max.
Liquidous temperature (T_L)		217°C
Time at liquidous (t_L)		60 - 150 Seconds
Peak package body temperature (T_p)		260°C
Time (t_p) within 5°C of the specified classification temperature (T_C)		30 Seconds
Average ramp-down rate (T_p to T_{smax})		6°C / Second Max.
Time (25°C to Peak Temperature)		8 Minutes Max.

Temperature Derating Curve

Normal ambient temperature: 23+/-3°C

Operating temperature: -55 ~ 125°C, with proper correction factor applied



Package

5000 fuses on 8mm tape-and-reel on a 7 inch (178mm) reel per EIA Standard 481.

--- End of Document ---